

ColorGATE PROOFGATE⁴

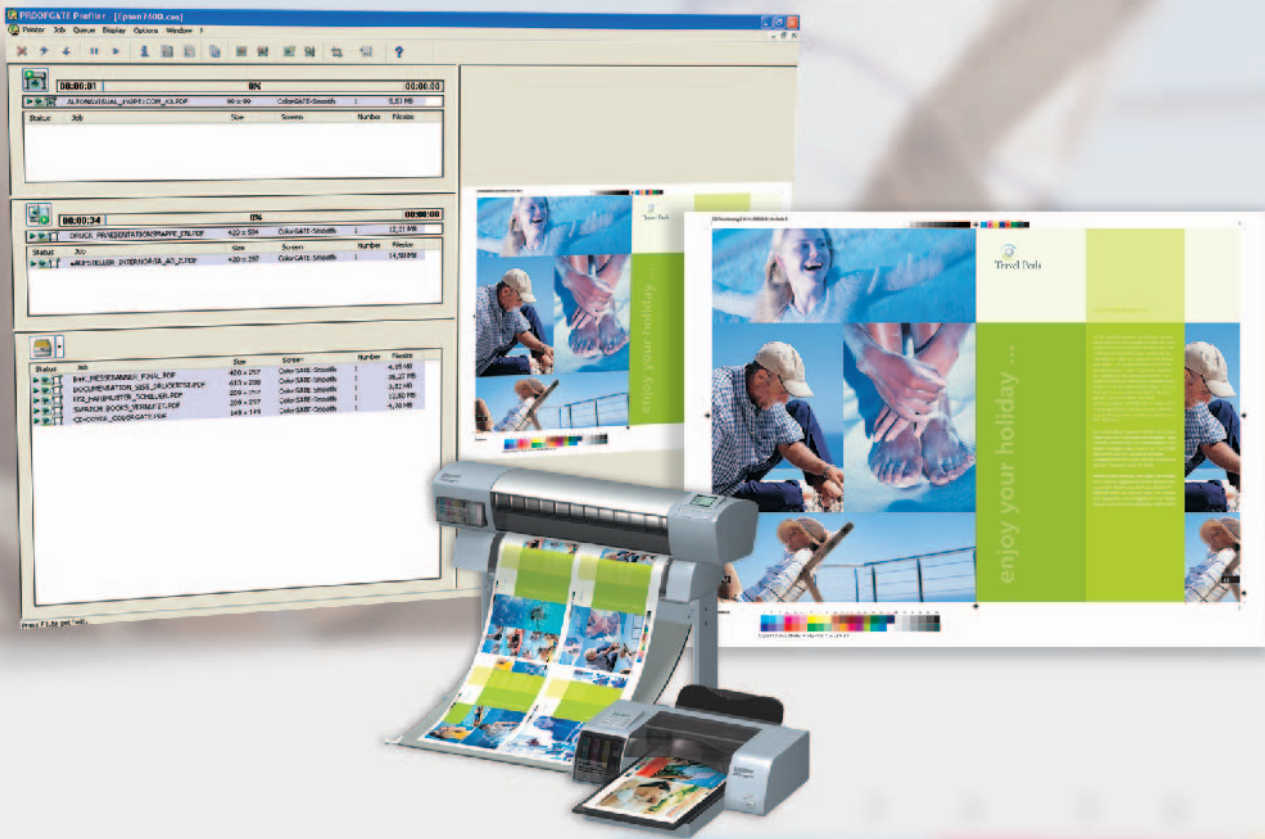
Certified contract proofing!



- Easy to operate software
- Produces color accurate contract proofs according to industry standards (ISO 12647-2)
- Supports PDF/X (-1a and -3) and custom file formats
- Integrated Ugra/FOGRA media wedge and evaluation tools for validating proof quality
- Separation preserving DeviceLink Technology



 **ColorGATE**



Legal security thanks to industry standards

Services previously limited to specialized companies are now finally available to all users from the graphics industry: **A standardized digital proofing solution, which makes your proof production reliable and secure.**

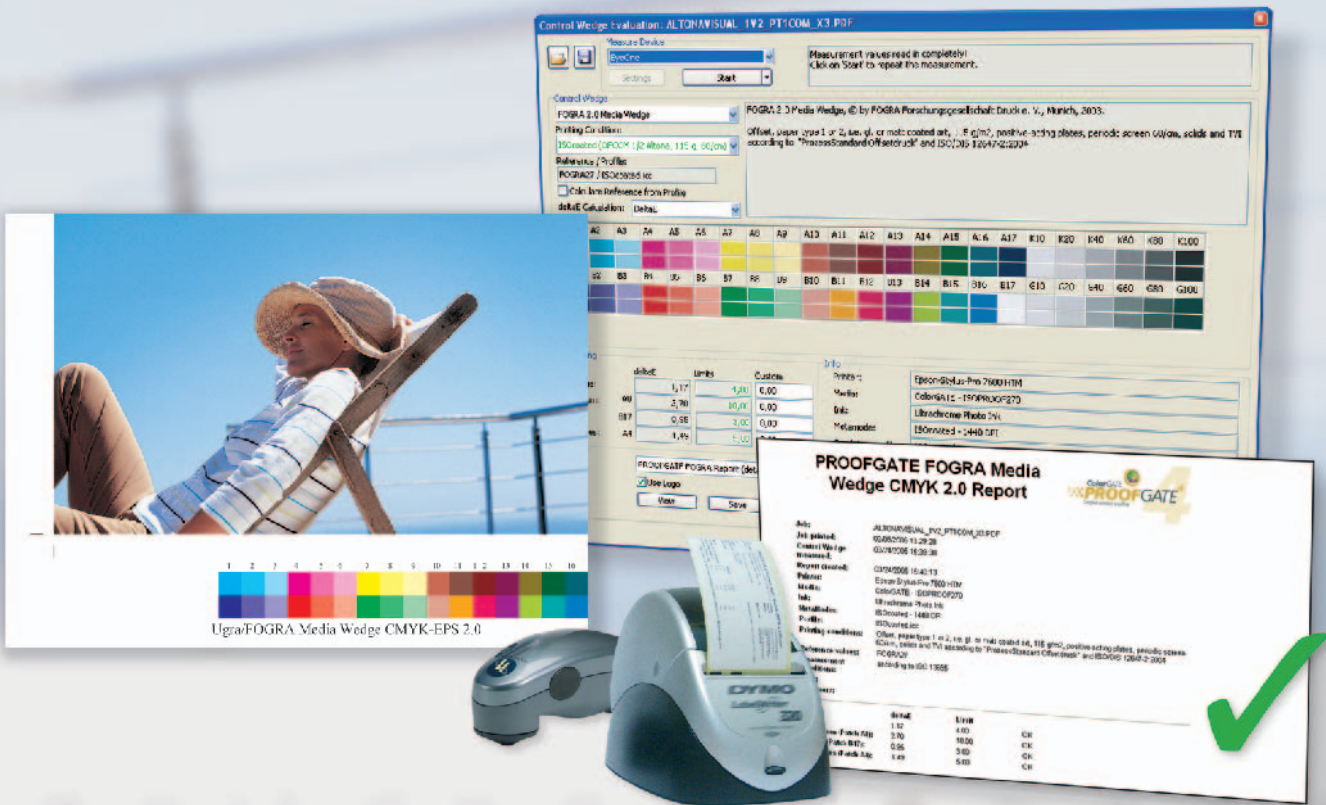
With the **PROOFGATE⁴** software, **ColorGATE** developed the first proofing solution with the licensed FOGRA media wedge for creating standardized digital proofs.

Without the FOGRA media wedge, you have no binding guarantee that the printer can provide a print product which is within acceptable tolerances of your digital proof. The **PROOFGATE⁴** software was therefore developed according with the specifications of FOGRA and the bvdm (German Association for Print and Media), and based on the recommendations of the ECI to meet ISO 12647-2 specifications.

The FOGRA media wedge integrated in the full version can be printed along with every proof. This control wedge can then be measured using a spectrophotometer and checked to ensure it complies with the standard. Subsequent production control is handled almost automatically by the **PROOFGATE⁴** software. A proof report can also be printed by a label printer.

PROOFGATE⁴ can easily be integrated in any individual workflow and is therefore the perfect in-house solution for:

- **Design and advertising agencies**
- **Pre press companies**
- **Printers**
- **Publishing houses**
- **Marketing departments**
- **And many others**



Testimonials

"... Since creating proofs has become as easy as making a normal color print, we are much more confident in our work. In particular, we can create proofs quickly at any time, and assess our own creation or the implementation of photos. Work is now a lot more fun. The proofs with the media wedge are accepted without complaint by the printers and we have been satisfied with all prints. ..."

Anja Rosendahl
Rosendahl Graphic Design, Berlin

"... We are now receiving more and more external proofing jobs. We work in a tight-knit creative environment here. Neighboring agencies send us more and more proofs, as we provide quick and secure results. With this service, they use our flexible in-house solution...."

Marc Stantien,
Stantien Photodesign, Braunschweig

CrossXColor & DeviceLink Technology

The CrossXColor and DeviceLink technologies meet the requirements for professional color management, because they guarantee lossless separation conversion of CMYK to CMYK.

Taking consideration into parameters like printing system, environmental conditions, linearization behaviors, and many others, results in a considerable increase in quality and color accuracy.

This allows you to avoid interfering effects such as chromatic build-up of achromatic colors. **PROOFGATE⁴** thus meets the requirement of contract proofing to simulate the color characteristics of the printing press exactly. For more exact proof results (more minimal deltaE deviations) use the wizard guided DeviceLink Optimizer, which is available as an option.



Simple Operation

Complex processes require user-friendly interfaces to guarantee uncomplicated and safe operation.

We therefore tried to ensure that the interface is simple and structured. Predefined workflow and job settings facilitate automatic production of high-quality proofs.

PortMonitor

The PortMonitor comes with a virtual printer that allows you to print easily from any work environment (PC, Mac or Unix/Linux). All incoming print jobs are automatically processed according to definable procedures. Dynamic PPD creation is a new feature which, in addition to the regular selection of print-specific parameters, the various MIM combinations in the print menu can now also be selected. Furthermore, you can now send all of the relevant job parameters with the print file, your need for hotfolders is minimized.

Spot Color

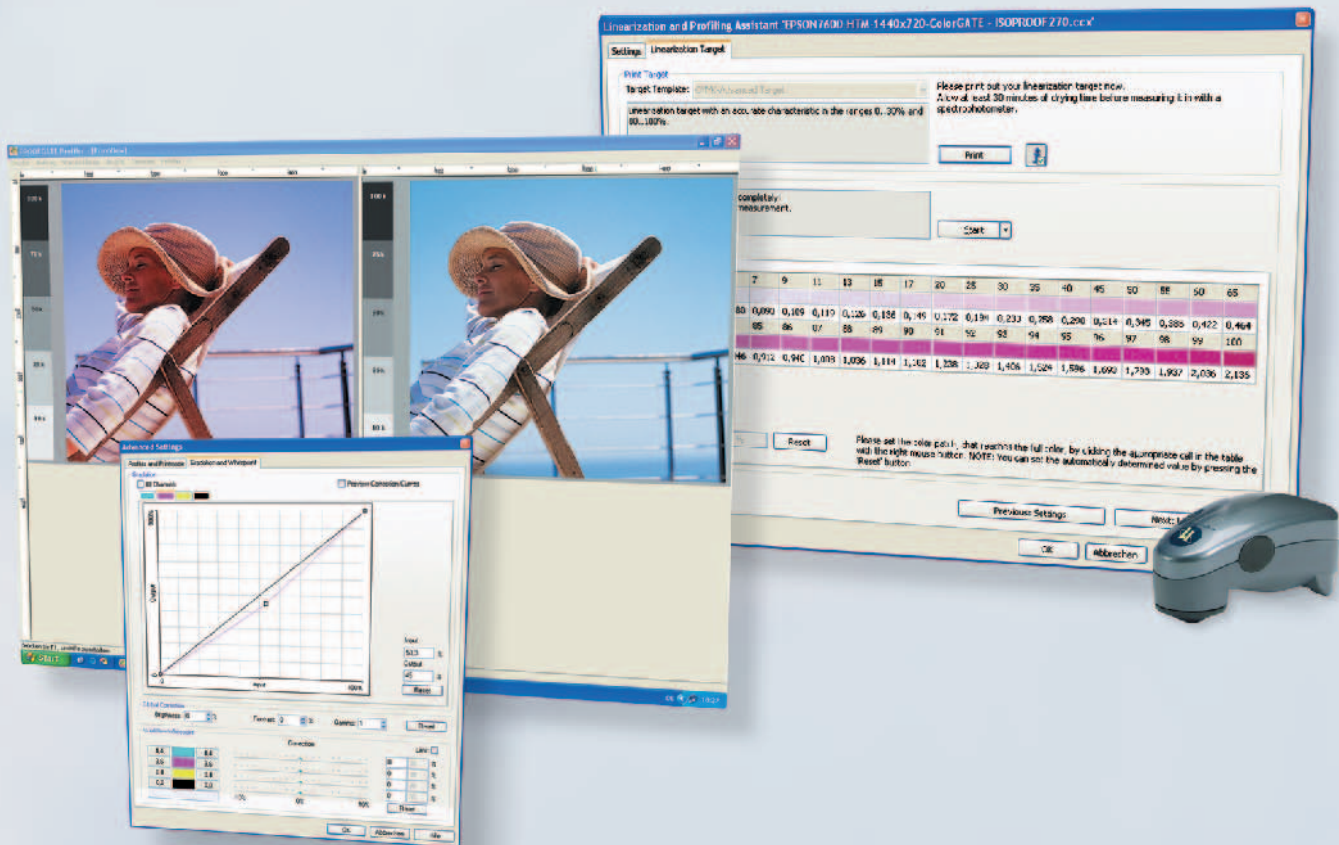
PROOFGATE⁴ allows you to create and manage spot color tables. They can be manually created in CMYK or Lab values, or read directly via measuring devices such as Eye-One.

HKS™ replacement tables are an integral component of the **PROOFGATE⁴** software. Pantone® tables are included with the **PROOFGATE⁴ & Eye-One bundles**.

High RIP-Performance

In daily use by the graphics industry, excellent performance and reliability are the basic requirements for efficient production.

All our products are therefore equipped with the same basic modular RIP technology. This allows you to expand your production environment easily by adding additional printers, queues etc.



Linearization & Profiling

The linearization and profiling assistant guides the user through all relevant calibration steps, thus facilitating simple and safe operation.

The primary colors and the total ink laydown can be restricted via the integrated limiting option, allowing it to be adapted for all production media.

In this way, no additional steps are required to create binding proofs for many types of proofing media, for example **ISOPROOF^{270g}**, as the required profiles of the supported printers are also included in the package.

PROOFGATE⁴ utilizes gradations curves, white point editing, and now a new input dot gain compensation feature to make visual corrections to a proof.

Spectral Linearization Synchronization

This RIP function is used to normalize one or more print systems to the original linearization. A software assistant also guides you through all the required steps for this function. First, you select the paper used, the inks and the reference profile (MIM combination). Then you print and measure the integrated linearization chart.

PROOFGATE⁴ then calculates the deviations from the original linearization and automatically adjusts them. This completes synchronization, guaranteeing the basis for remote proofing applications and high color accuracy.



Customized Solutions

PROOFGATE⁴ is extremely flexible software, with the right software package for every use:

PROOFGATE⁴ ENTRY - The solution for newcomers to the digital proofing market. This software contains all you need for top quality proofing! The FOGRA media wedge and the evaluation software are **not** included!

PROOFGATE⁴ - The full version contains all required features for legally-binding proofing! The FOGRA media wedge and the evaluation functions are already integrated. Features like Multi-color support and JDF support are included.

PROOFGATE⁴ PROFILER - Features as for full version. This version also includes the option of creating ICC and DeviceLink profiles directly in the software. This package is the perfect solution for outstanding production control if you already own a spectrophotometer.

If you do not own a spectrophotometer, these bundle versions are particularly good value:

PROOFGATE⁴ & Eye-One/iColor - The perfect bundle for creating and synchronizing linearizations, specifying spot colors and evaluating media wedges.

PROOFGATE⁴ PROFILER & Eye-One/iColor - pure independence! Create your own linearizations, profiles and evaluate all functions.

*The ideal **PROOFINGPAPER** for certified contract proofing:*

Also the paper plays a major role in achieving accurate and reliable contract proofing based on FOGRA specifications. That's why we now provide **ISOPROOF^{270g}**, a certified proof paper that is perfectly tuned to **ColorGATE**'s range of products and is available in sheet or roll form.





Supported File Types

PROOFGATE⁴ processes all current file formats from the pre-press stage, such as PostScript 3, EPS, TIFF, JPEG, PDF 1.4, PDF/X (-1a and -3) and many more.

Multi-page PDF and PS files are processed quickly and reliably.

Security with PDF/X

For process security and quality, it is recommended that you use PDF/X when supplying files to the printer, as it guarantees that fonts, images and colors are transferred with the data.

In addition to PDF/X-1a, PDF/X-3 is of course fully supported.

Supported Printers

The **PROOFGATE⁴** software is available in **Small**, **Medium**, and **Large** editions, each with different printer support options:

Small Edition:

Canon i9950 / W2200
 EPSON Stylus Photo 2100 HTM / 2200 HTM / Pro 4000 HTM / 5500
 HP Designjet 10PS / 20PS / 30 / 50PS

Medium Edition:

Canon W6200 Pigment PB / W7250 PB
 EPSON Stylus Pro 7600 HTM
 HP Designjet 120 / 130

Large Edition:

Canon W7200 PB / W8200 PB / W8200 Pigment PB
 EPSON Stylus Pro 9600 HTM / 10000 HTM / 10600CF HTM / 10600DYE HTM / 10600UC HTM
 HP Designjet 5000C / 5000UV / 5500C / 5500UV

All Editions:

Others: Windows Driver PS¹ / SoftProof RGB²

¹ Special driver that applies color transformations to an incoming file and creates CMYK output for any Windows PostScript Printer.

² Special driver that applies color transformations to an incoming file and creates output as a JPEG file for soft proofing.

The **2Production** option facilitates parallel control of any two printers from all editions – a maximum of six simultaneously addressable printers are available.

Technical Facts

PROOFGATE⁴ ENTRY

Operating Systems	<ul style="list-style-type: none">• Windows 2000/XP/2003 (Copying of data from MacOS/Unix/Linux via ColorGATE PortMonitor)
File Types	<ul style="list-style-type: none">• Automatic file format recognition• PostScript 3, PDF 1.4, PDF/X (-1a and -3), EPS, JPEG, TARGA, TIFF, BMP, PCD, PSD, DCS 2.0, etc.• Multi-page PDF and PostScript
Interfaces	<ul style="list-style-type: none">• Parallel, Ethernet, TCP/IP, USB, Serial, SCSI, Firewire
Languages	<ul style="list-style-type: none">• Chinese, Danish, Dutch, German, English, Finnish, French, Italian, Japanese, Korean, Norwegian, Polish, Portuguese, Russian, Spanish, Thai, Turkish
Workflow	<ul style="list-style-type: none">• PortMonitor: Print from any Mac, Win, Unix or Linux application directly into a hotfolder. Print jobs are then automatically processed according to a definable procedure.
ENHANCED	<ul style="list-style-type: none">• Dynamic PPD capability to define RIP and printer configuration.• Rip and print simultaneously: Prints a file whilst ripping• Adjustable workflow settings• Drag-and-Drop• Preview options: Job preview, job placing on output media, rotate job, zoom in-/out for preview, color correction• Job Sorter: Sort your jobs by status, alphabetically, file- and output size, number of copies• Duplicate jobs: Copy any job or link to an existing file• Archiving of print files• Freely definable scaling• Saving of cut, registration and overlap markings• CROPPING: CROPPING tool to select print areas• Mirroring and rotation in 90°-steps• AUTO ROTATE: Automatic placing for efficient media use• Printing of freely definable text and job information• Offset & centering• Multiple copies; Only one Rip-process for printing several copies• AUTO TILING: Automatic paneling• Overlap in the TILING on the x and y direction• CONTAINER: Automatic or manual placement of differing jobs• JOB-ACCOUNTING: Rip-time, printing time and area
Color Management	<ul style="list-style-type: none">• CrossXColor ICC-Engine• Spectral-based linearization wizard with ink limitation option for primary colors and total ink laydown• Linearization synchronization to match local linearization to original linearization• MIM-(Media-Ink-Metamode) Technology• MIM-Combinations according to ISO 12647-2 included with software

- MIM-Administration:
 - ... Create, copy and modify MIM-files (*.cgm)
 - ... Load **ColorGATE** Media Packages (*.cmp)
 - ... Save **ColorGATE** Media Packages (*.cmp)
- NEW**
- For visual proof optimization, corrections are possible using input dot gain compensation (**new**), gradation curves and white point editing.
 - Soft proof: Display a simulation of the ICC-link in the preview
 - Spot color replacement in CMYK, LAB and with direct spectrophotometer integration selectively applicable to vectors, bitmaps and text, HKS™ color replacement tables included with HKS™ E, K, N and Z, optional Pantone® color replacement tables, alias assignment, administration of as many replacement tables and entries as desired. Compatible with color palettes of the leading application packages over new CxFormat.
 - Interactive color correction tools for brightness, contrast, gamma and gradation. Pipette tool supports image preview before correction, after correction

PROOFGATE⁴ includes the following not shipped with **PROOFGATE⁴ ENTRY:**

- CrossXColor DeviceLink Technology
Color space transformations that retain separation properties
- Integrated ugra/FOGRA media wedge 2.0
- Media wedge validation with report function; apart from ISO, custom ICC profiles can be used as a control reference, various protocols (HTML-Format) with label printer support, recording of all proof relevant information and the printing and measurement time.
- JDF support
- Support of multi-color profiles with up to 15 color channels
- Direct matching of spot colors to printer gamut

PROOFGATE⁴ PROFILER includes the following not shipped with **PROOFGATE⁴:**

- ICC profiling function with Assistant guidance

Options **NEW**

- Wizard guided DeviceLink Optimizer provides even more exact proof results by minimizing deltaE deviations

Measurement Devices

- GretagMacbeth Eye-One, Spectrolino/SpectroScan, iColor, X-Rite DTP-20/22/70, DTP41/USB

Recommended system requirements (Minimum)

- Intel Pentium III or higher (Pentium II)
- 512 MB RAM (128 MB RAM)
- 40 GB Harddisk (10 GB Harddisk)
- Win 2000/XP/2003
- LAN Adapter - TCP/IP

With compliments from your **ColorGATE** Partner

 **ColorGATE**

ColorGATE Digital Output Solutions GmbH
Göttinger Chaussee 115 · 30459 Hannover · Germany
Fon: +49 (0) 511 - 942 93-0 · Fax: +49 (0) 511 - 942 93-40
E-Mail: contact@colorgate.com · Web: www.colorgate.com