

**ColorGATE**  
**SYSTEM SOLUTIONS**  
FOR BRILLIANT IMAGES  
PHOTO&FINEART MODULE · PHOTOGATE<sup>4</sup> PRO/RASTER

- Photo and FineArt Productions on inkjet printers in high-end quality
- Optimized production reliability and workflow
- Perfection in combination with the ColorGATE PRODUCTIONSERVER<sup>4</sup>



**ColorGATE**



Container - saves space and time

## ColorGATE Photo and FineArt Technology – impressively sharp details on a

### True-to-life printing made easy

What good is the reproduction of a perfect image if it doesn't do justice to the original? **ColorGATE** offers photographers, designers, agencies and service companies a professional software solution: now they can put the fascination of the original 1:1 on paper using an inkjet printer with visual or other measuring tools. Automated and reproducible any time in perfect coordination between the printer, the ink and the presentation medium. Regardless of whether you choose aquarelle, hand-made or photo and fineart paper, **ColorGATE Photo and FineArt Technology** guarantees an optimal workflow plus absolute production reliability.

### Two convenient modular solutions, which can be expanded at any time, put optional efficiency into your workflow:

- **PHOTO&FINEART** Module – Power add-on for platform independent center management of the **ColorGATE PRODUCTIONSERVER<sup>4</sup>**
- **PHOTOGATE<sup>4</sup>** – **ColorGATE Photo and FineArt Technology** as stand-alone software. Available in the following versions:
  - **PRO** (bitmap and all popular pre-press file formats)
  - **RASTER** (bitmap file formats)

### ColorGATE Photo and FineArt – a delight to the eye

- One look at the possibilities will have you amazed:
- Photo and art prints in high-end quality
  - Image art production on a diverse range of media
  - Neutral grayscale images
  - Individual effect toning
  - Color adaptation to compensate ambient light
  - Image series incl. EXIF information
  - High-quality color and black-and-white prints

### ColorGATE Photo and FineArt – flexible and sophisticated

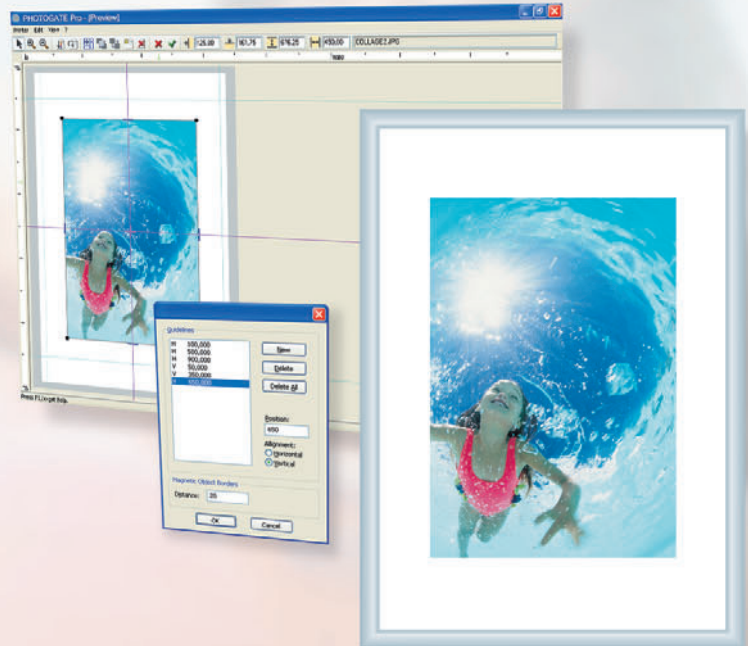
**ColorGATE** is able to reproduce images from any system environment (Mac, Windows, Linux, Unix). To do so, **ColorGATE** creates a virtual printer (PortMonitor), which automatically processes incoming jobs. The dynamic creation of PPDs makes it possible to include all the print-specific parameters plus MIM combination with the printing file, thus reducing the number of hotfolders needed to a minimum.

## Special Package Prints



Special Print Simulation

## Positioning & Arranging



**Special "Positioning & Arranging":** A perfect presentation is half the battle. In Container guide lines and an alignment function make it easy to perfectly position your motif. Regardless of whether you place it manually or center it with a click or two of the mouse.

## ColorGATE Photo and FineArt – optimum printing at the touch of a button

Once done can always be done anytime again: **ColorGATE** stores the quality-relevant parameters for every print job in an MIM combination (Media-Ink-Metamode). The unique MIM technology provides ultimate convenience in complete production control and reduces later color and printing errors to a minimum. Any MIM combination can be freely edited, if required.

## ColorGATE Photo and FineArt – what you see is what you get

Just correct something or touch it up a bit and see right away how the printer reacts. The softproof preview gives you absolutely concrete results in the simulated color space. And for a more objective opinion in a before-and-after version. Particularly useful: the color info display, which provides information on the color percentages before and after the correction.

## ColorGATE Photo and FineArt – a real team worker

Found a mistake in the softproof preview? Keep cool. A quick click of the mouse activates the image processing software (e.g. Photoshop®) directly from the printing queue and automatically loads the image that needs correcting. Once the correction has been made, simply save the image and the print job in progress can continue immediately. **ColorGATE** takes complete charge of file management even behind the scenes.

## ColorGATE Photo and FineArt – automatically effective

Convert CMYK and RGB into grayscale images at the click of a mouse. Or use filters to create individual tonings. But **ColorGATE** can do even more: it can store precise grayscale linearization you have created yourself as an individual profile. And take it all together if you need it to produce identical quality anytime every time in a hotfolder – highly efficient for server RIPs with several network users.

## ColorGATE Photo and FineArt – drives all kinds of printers

For the list of supported printers and a detailed overview of the functions, go to [www.colorgate.com](http://www.colorgate.com).



Automatically effective



## all media

### ColorGATE Photo and FineArt – unlimited printer compatibility

No professional inkjet printer handy? No problem. The **ColorGATE RIP** is also able to work with any other Windows® driven consumer device. It is even possible to profile a Windows® inkjet printer. Provided that it is a four-color printer, high-quality results are guaranteed.

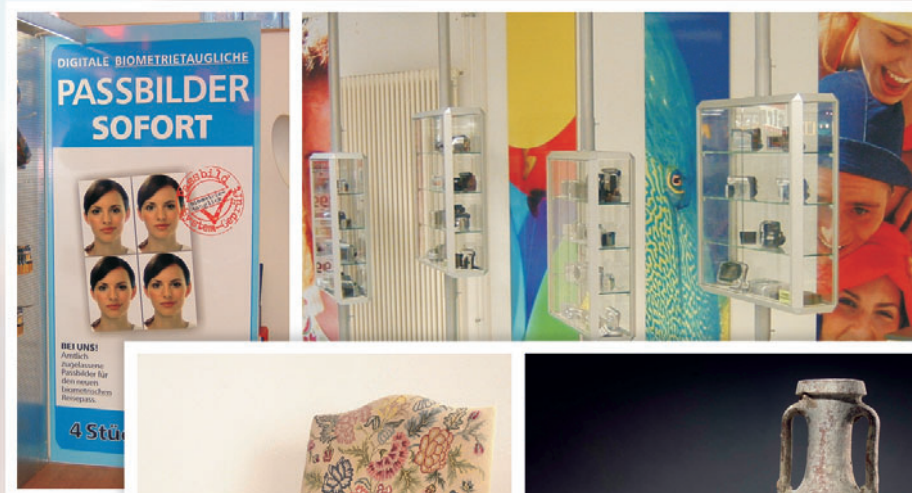
### ColorGATE Photo and FineArt – saves space and time

**ColorGATE** means business when it comes to intelligent job management and optimum equipment utilization. Simply select "Container" for any sized batch job and the number of copies, choose your medium and layout, select the paper format and you're done. The function then automatically distributes the prints or positions them freely to save material over the full media width.

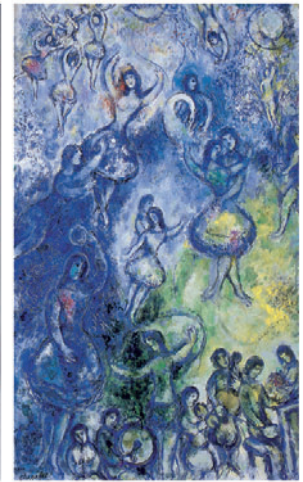
**Special "Package Prints":** Printing different motif sizes and effects on a single sheet has never been easier! Simply copy the files you need in the Container and position them in the layout by marking space, cut marks, centering, frame, etc. Individual package prints can't get much quicker and more efficient than that.

**Special "Print Simulation":** Which printing process is the best? **ColorGATE** has the answer at a glance, without a lot of long involved data conversion. Simply assign each copy in a Container a different color space profile at the same time, print it and let the result in ISO coated, ISO uncoated and/or SWOP color space decide. Unpleasant surprises after the fact are out of the question.

**Special "Informative Contact Sheets":** When was which picture taken at which shutter speed and exposure time on which camera? Interesting information, not only for the archive and looking at contact prints, but added value for valuable one-off prints. Modern cameras store everything in EXIF format. **ColorGATE** is able to read out this information and print it out as text.



Authentic object illustrations of auction goods - Christie's auction house



## Satisfied customers are the best references



Heino Kaiser

**Heino Kaiser**, Managing director at photo dose GmbH: "... With its 67 branch offices, photo dose is the largest photo shop in northern Germany – specializing in the sale of cameras and services. We produce all of our advertising materials in-house. From slides in the light box right on up to curtains and large-scale displays. Our equipment: **ColorGATE PHOTOGATE<sup>4</sup>** and a HP designjet 5000 from Macron. After all, top quality in your own advertising is the place to start."

**Peter Ackermann**, Head of production at Cewe Color AG & Co. OHG: "... As Europe's market leader in industrial photo finishing, we supply more than 60,000 partners in 19 countries with thousands of developed color photos, photo and digital prints on such different media as paper, canvas or film every day. The only way to do that is to use highly automated mass production with cutting-edge technology like the **ColorGATE PHOTOGATE<sup>4</sup> PRO** in combination with the Epson Stylus Pro 9800. **PHOTOGATE<sup>4</sup>** has found the optimal solution for handling, color management and flexibility."



Neil McCutcheon

**Neil McCutcheon**, Head of Catalogue Production at Christie's auction house: "... The flexibility of **PHOTOGATE<sup>4</sup> PRO** with the **PROOF** Module makes it an ideal solution for Christie's. The system produces authentic object illustrations of our auction goods, along with true-to-life color catalogue prints in the subtractive CMYK spectrum. Regardless of the format, everything can be done reliably with one and the same application. In addition, the system is equipped with an extremely convenient user interface that makes operation easier than you could have ever imagined. It is a real pleasure to work with **ColorGATE**."

**Mario Rodrigues**, Managing director at photo lab diaservice: "... Since digital printing has more or less replaced conventional photo enlargements, the perfectly harmonized system components are our guarantee for professional photo and fine-art productions. **ColorGATE** provides our Epson Stylus Pro 9800 with **PHOTOGATE<sup>4</sup> PRO** and **PROOF** Module with everything that we need in terms of color management and media flexibility."

## ColorGATE – surf in and find out

Comprehensive, competent support with short response times during daily production is a top priority at ColorGATE. We are happy to support you in optimally integrating your ColorGATE software into your production environment and to assist you in the area of color management or profiling.

Welcome to [www.colorgate.com](http://www.colorgate.com)! Here you will find the answers to all your questions. You will also find the most recent download updates for your software and information about the functions in new versions.

Should you still have questions, however, you can simply give us a call: +49 (0)511 - 9 42 93-0. We look forward to hearing from you!



## ColorGATE – the right product for every solution

Add Modules to your ColorGATE PRODUCTIONSERVER<sup>4</sup> to make it as profitable as you need it to be:

**PROOF** Module – Legally binding proofing based on a licensed media wedge, developed according to FOGRA and bvdm requirements and recommendations of the ECI in compliance with media standard printing (ISO 12647-2). Including DeviceLink technology, measuring, evaluation and reporting functions.

**PROFILER** Module – Full color control over all printing media with individually created ICC profiles. The linearization and profile assistant guides the user through all the relevant settings. The result: no doubt about it – professional MIM combinations (Media-Ink-Metamode).

**EXPRESS PROFILER** Module – Quick, assistant-guided adaptation of existing printing profiles on other FineArt papers. Saves time and material.

**REFERENZ PROFILER** Module – Convenient production of individual ICC profiles for Photoshop printing jobs.



ColorGATE Digital Output Solutions GmbH  
Große Düwelstraße 1 · 30171 Hannover · Germany  
Fon: +49 (0) 511 - 942 93-0 · Fax: +49 (0) 511 - 942 93-40  
E-Mail: [contact@colorgate.com](mailto:contact@colorgate.com) · Web: [www.colorgate.com](http://www.colorgate.com)



With compliments from your ColorGATE Partner